

# Richmond Carpet Tile

## 2023 Product Catalog



## SPECIFICATIONS

**Fiber Type:** 100% Solution Dyed BCF Polypropylene

**Backing:** EcoBak Modular (100% PVC Free)

**Tile Size:** 19.7" x 19.7"

**Dye Method:** Solution Dyed

**Construction:** Multi-Level Loop

**Pile Face Weight:** 21 oz

**Pile Height:** 3.5 - 6.2mm

**Stitches per inch:** 10

**Number of Colours:** 4

**Gauge:** 1/12"

**Recommended Adhesive:** Mapei Ultrabond ECO811

**Installation Methods:** Quarter Turn, Modified Ashlar

## PERFORMANCE TESTING

**Flammability/Radiant Panel:** ASTM E648 CLASS 1

**Smoke Density:** ASTM E662 < 450

**Colourfastness:** AATCC16 = 5.0

**Static Generation:** AATCC 134 < 3.5kv

**Stain Resistance:** AATCC 175-2003 = 10

## SUSTAINABILITY & CERTIFICATIONS

**CRI Indoor Air Quality:** GLP 1727

**Greenguard:** Yes

**Recycled Content:** Approx. 20% in backing

## PACKAGING

**Tiles/Cartron:** 20

**SY/Cartron:** 5.98

**Carton Weight:** 38.6 lbs

**Cartons/pallet:** 32

## WARRANTY

**Wear:** Lifetime

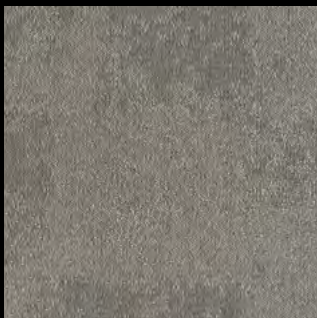
**Delamination:** Lifetime

**Dimensional Stability:** Lifetime

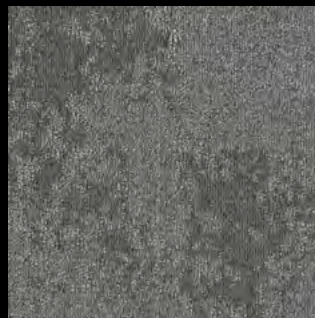
**Backing Performance:** Lifetime



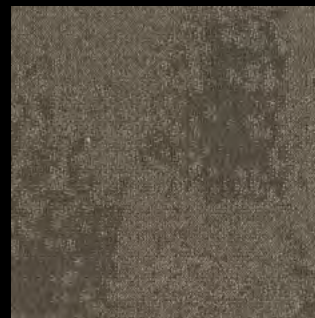
## COLOURS



**SUBTLE**  
RCO0001ABST19



**ENIGMATIC**  
RCO0002ABST19




**HIDDEN**  
RCO0005ABST19



**INDEFINITE**  
RCO0010ABST19





Abstract is a mainstreet commercial carpet tile that features a soothing and subtle organic pattern, with warm tonal colourations. This 20"x20" tile is made of 100% BCF solution dyed polypropylene which is stain and fade resistant. The extremely stable Ecobak modular backing contains 20% recycled content.

◀ SUBTLE  
RCO0001ABST19

# Aspiration

## SPECIFICATIONS

**Fiber Type:** 100% Solution Dyed BCF Polypropylene

**Backing:** EcoBak Modular (100% PVC Free)

**Tile Size:** 19.7" x 19.7"

**Dye Method:** Solution Dyed

**Construction:** Multi-level loop

**Pile Face Weight:** 20 oz

**Pile Height:** 3 - 5.5mm

**Stitches per inch:** 10

**Number of Colours:** 4

**Gauge:** 1/12"

**Recommended Adhesive:** Mapei Ultrabond ECO811

**Installation Methods:** Quarter Turn, Modified Ashlar

## PERFORMANCE TESTING

**Flammability/Radiant Panel:** ASTM E648 CLASS 1

**Smoke Density:** ASTM E662 < 450

**Colourfastness:** AATCC16 = 5.0

**Static Generation:** AATCC 134 < 3.5kv

**Stain Resistance:** AATCC 175-2003 = 10

## SUSTAINABILITY & CERTIFICATIONS

**CRI Indoor Air Quality:** GLP 1727

**Greenguard:** Yes

**Recycled Content:** Approx. 20% in backing

## PACKAGING

**Tiles/Cartron:** 20

**SY/Cartron:** 5.98

**Carton Weight:** 37 lbs

**Cartons/pallet:** 32

## WARRANTY

**Wear:** Lifetime

**Delamination:** Lifetime

**Dimensional Stability:** Lifetime

**Backing Performance:** Lifetime



## COLOURS



**DREAM**  
RCO0001ASPI19



**EMULATE**  
RCO0002ASPI19




**HOPE**  
RCO0003ASPI19



**GOAL**  
RCO0004ASPI19





Aspiration is a uniquely modified linear pattern of broken striations in a subtle light/dark motif. The warm and trendy neutral tones are perfect for any interior office space décor. This 20"x20" tile is made of 100% BCF solution dyed polypropylene which is stain and fade resistant. The extremely stable Ecobak modular backing contains 20% recycled content.

◀ EMULATE  
RC00002ASP119



## SPECIFICATIONS

**Fiber Type:** 100% Solution Dyed BCF Polypropylene

**Backing:** Virgin PVC with Fiberglass

**Tile Size:** 19.7" x 19.7"

**Dye Method:** Solution Dyed

**Construction:** Multi-level loop

**Pile Face Weight:** 22oz

**Pile Height:** 2.8/5 (±0.5)mm

**Stitches per inch:** 10.5

**Number of Colours:** 8

**Gauge:** 1/12

**Density:** 3787

**Recommended Adhesive:** Mapei Ultrabond ECO350

**Installation Methods:** Modified ashlar, quarter turn

## PERFORMANCE TESTING

**Flammability/Radiant Panel:** ASTM E648 CLASS 1

**Smoke Density:** ASTM E662 < 450

**Colourfastness:** AATCC16 = 5.0

**Static Generation:** AATCC 134 < 3.5kv

**Stain Resistance:** AATCC 175-2003 = 10

## SUSTAINABILITY & CERTIFICATIONS

**CRI Indoor Air Quality:** GLP1877

**Greenguard:** Yes

**Recycled Content:** N/A

## PACKAGING

**Tiles/Carton:** 20

**SY/Carton:** 5.98

**Carton Weight:** 55lbs

**Cartons/pallet:** 20

## WARRANTY

**Wear:** Lifetime

**Delamination:** Lifetime

**Dimensional Stability:** Lifetime

**Backing Performance:** Lifetime



## COLOURS



**CHARCOAL**  
RCO0005COLL19



**GREYSTONE**  
RCO0003COLL19



**GUN METAL**  
RCO0008COLL19



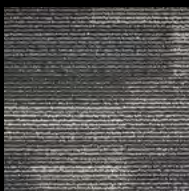
**LINEN**  
RCO0002COLL19



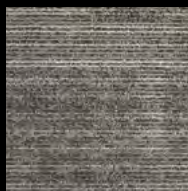
**STONEWASH**  
RCO0010COLL19




**TAUPE**  
RCO0004COLL19



**MIDNIGHT**  
RCO0009COLL19



**NEUTRAL TAUPE**  
RCO0006COLL19



Collage is a 1/12th gauge Modular Carpet Tile in 8 colours that features a random rectangular design. This product co-ordinates with Linear Art. It is made of 100% Solution Dyed BCF Polypropylene with a superior stain resistance that has a fusion bonded virgin PVC backing that is reinforced with a fiberglass layer for dimensional stability. This carpet tile is solution dyed (colour fast) with a zipper free superior tuft bind and offers a lifetime warranty for delamination, dimensional stability, wear and backing.

◀ CHARCOAL  
RCO0005COLL19

## SPECIFICATIONS

**Fiber Type:** 100% Solution Dyed BCF Polypropylene

**Backing:** EcoBak Modular (100% PVC free)

**Tile Size:** 19.7" x 19.7"

**Dye Method:** Solution Dyed

**Construction:** Multi-level loop

**Pile Face Weight:** 18oz

**Pile Height:** 2.5 - 5.5mm

**Stitches per inch:** 10

**Number of Colours:** 4

**Gauge:** 1/12

**Density:** 4116

**Recommended Adhesive:** Mapei Ultrabond ECO811

**Installation Methods:** Quarter turn, modified ashlar

## PERFORMANCE TESTING

**Flammability/Radiant Panel:** ASTM E648 CLASS 1

**Smoke Density:** ASTM E662 < 450

**Colourfastness:** AATCC16 = 5.0

**Static Generation:** AATCC 134 < 3.5kv

**Stain Resistance:** AATCC 175-2003 = 10

## SUSTAINABILITY & CERTIFICATIONS

**CRI Indoor Air Quality:** GLP1727

**Greenguard:** Yes

**Recycled Content:** approx. 20% in backing

## PACKAGING

**Tiles/Carton:** 20

**SY/Carton:** 5.98

**Carton Weight:** 40lbs

**Cartons/pallet:** 32

## WARRANTY

**Wear:** Lifetime

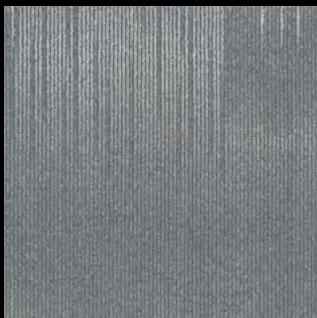
**Delamination:** Lifetime

**Dimensional Stability:** Lifetime

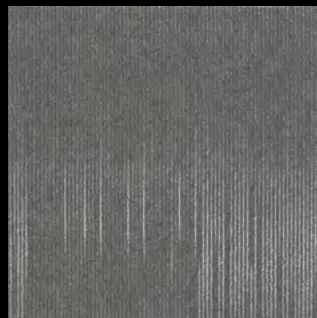
**Backing Performance:** Lifetime



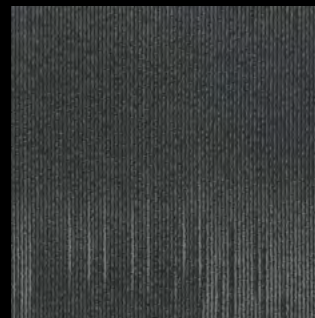
## COLOURS



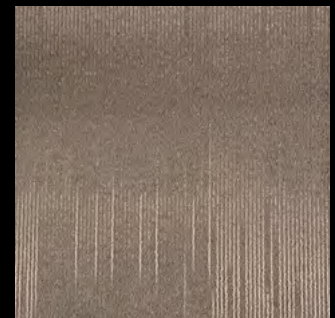
**IRON**  
RCO0004ELEM19



**COBALT**  
RCO0005ELEM19




**CARBON**  
RCO0006ELEM19



**SULFUR**  
RCO0001ELEM19





Element is polypropylene carpet tile designed for the mainstreet commercial market. The updated linear design features a striking light/dark tonal effect and is available in 4 on trend colours that are perfect for offices, waiting rooms or boutiques. This product is constructed with EcoBak modular backing that is 100% PVC free and contains 20% recycled content.

◀ IRON  
RCO0004ELEM19



## SPECIFICATIONS

**Fiber Type:** 100% Solution Dyed BCF Polypropylene

**Backing:** EcoBak Modular (100% PVC free)

**Tile Size:** 9.8" x 39.4"

**Dye Method:** Solution Dyed

**Construction:** Multi-level loop

**Pile Face Weight:** 16oz

**Pile Height:** 2.5 - 5.5mm

**Stitches per inch:** 9.5

**Number of Colours:** 4

**Gauge:** 1/12

**Density:** 3659

**Recommended Adhesive:** Mapei Ultrabond ECO811

**Installation Methods:** Monolithic, herringbone, ashlar, brick

## PERFORMANCE TESTING

**Flammability/Radiant Panel:** ASTM E648 CLASS 1

**Smoke Density:** ASTM E662 < 450

**Colourfastness:** AATCC16 = 5.0

**Static Generation:** AATCC 134 < 3.5kv

**Stain Resistance:** AATCC 175-2003 = 10

## SUSTAINABILITY & CERTIFICATIONS

**CRI Indoor Air Quality:** GLP1727

**Greenguard:** Yes

**Recycled Content:** approx. 20% in backing

## PACKAGING

**Tiles/Carton:** 20

**SY/Carton:** 5.98

**Carton Weight:** 39lbs

**Cartons/pallet:** 32

## WARRANTY

**Wear:** Lifetime

**Delamination:** Lifetime

**Dimensional Stability:** Lifetime

**Backing Performance:** Lifetime



## COLOURS



**ADORN**  
RCO0001ENHA09



**HEIGHTEN**  
RCO0002ENHA09




**INTENSITY**  
RCO0003ENHA09



**ELEVATION**  
RCO0004ENHA09





Enhance is polypropylene carpet tile designed for the mainstreet commercial market and is available in 4 on trend colours. The trendy plank design showcases a serene organic visual with a subtle tonal effect that gives the appearance of textural interest. This product is constructed with EcoBak modular backing that is 100% PVC free and contains 20% recycled content.

◀ HEIGHTEN  
RC0002ENHA09

# Expressway

## SPECIFICATIONS

**Fiber Type:** 100% Solution Dyed BCF Nylon

**Backing:** Virgin PVC with fiberglass

**Tile Size:** 19.7" x 19.7"

**Dye Method:** Solution Dyed

**Construction:** Patterned loop

**Pile Face Weight:** 19oz

**Pile Height:** 3-5 mm

**Stitches per inch:** 10

**Number of Colours:** 4

**Gauge:** 1/12

**Density:** 4114

**Recommended Adhesive:** Mapei Ultrabond ECO350

**Installation Methods:** Quarter turn, modified ashlar

## PERFORMANCE TESTING

**Flammability/Radiant Panel:** ASTM E648 CLASS 1

**Smoke Density:** ASTM E662 < 450

**Colourfastness:** AATCC16 = 5.0

**Static Generation:** AATCC 134 < 3.5kv

**Stain Resistance:** AATCC 175-2003 = 9

## SUSTAINABILITY & CERTIFICATIONS

**CRI Indoor Air Quality:** GLP1721

**Greenguard:** Yes

**Recycled Content:** N/A

## PACKAGING

**Tiles/Carton:** 20

**SY/Carton:** 5.98

**Carton Weight:** 55 lbs

**Cartons/pallet:** 28

## WARRANTY

**Wear:** Lifetime

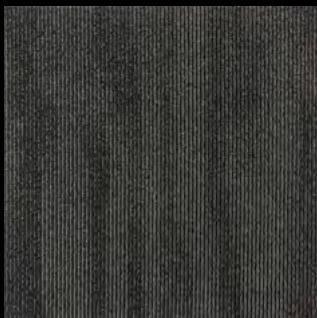
**Delamination:** Lifetime

**Dimensional Stability:** Lifetime

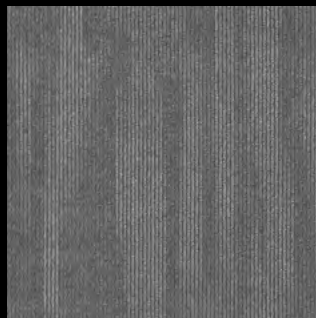
**Backing Performance:** Lifetime



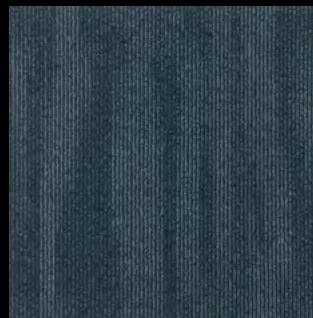
## COLOURS



**HIGHWAY**  
RCO0003EXPR19



**MAINSTREET**  
RCO0002EXPR19




**NAVY PIER**  
RCO0004EXPR19



**SIDEWALK**  
RCO0001EXPR19





Expressway is a 100% Solution Dyed BCF Nylon carpet tile featuring the most popular mainstreet colours. This product is suitable for any office or public space décor and will perform in heavy commercial spaces.

◀ MAINSTREET  
RC0002EXPR19

## SPECIFICATIONS

**Fiber Type:** 100% Solution Dyed BCF Nylon

**Backing:** EcoBak Modular (100% PVC Free)

**Tile Size:** 13.1" x 39.4"

**Dye Method:** Solution Dyed

**Construction:** Multi-Level Loop

**Pile Face Weight:** 16 oz

**Pile Height:** 2.5 - 4.5mm

**Stitches per inch:** 11

**Number of Colours:** 5

**Gauge:** 1/12"

**Recommended Adhesive:** Mapei Ultrabond ECO811

**Installation Methods:** Herringbone, Ashlar, Brick

## PERFORMANCE TESTING

**Flammability/Radiant Panel:** ASTM E648 CLASS 1

**Smoke Density:** ASTM E662 < 450

**Colourfastness:** AATCC16 = 5.0

**Static Generation:** AATCC 134 < 3.5kv

**Stain Resistance:** AATCC 175-2003 = 9

## SUSTAINABILITY & CERTIFICATIONS

**CRI Indoor Air Quality:** GLP 1795

**Greenguard:** Yes

**Recycled Content:** Approx. 20% in backing

## PACKAGING

**Tiles/Carton:** 15

**SY/Carton:** 5.98

**Carton Weight:** 37 lbs

**Cartons/pallet:** 30

## WARRANTY

**Wear:** Lifetime

**Delamination:** Lifetime

**Dimensional Stability:** Lifetime

**Backing Performance:** Lifetime



## COLOURS



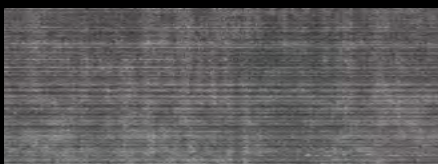
**ADMIRE**  
RCO0001EXQU13



**DELICATE**  
RCO0002EXQU13



**ADORE**  
RCO0003EXQU13



**ELEGANT**  
RCO0004EXQU13



**CHARM**  
RCO0005EXQU13



Exquisite is a unique mainstreet commercial carpet tile that perfectly combines the interplay between an organic and linear design in a trendy 13"x40" plank visual. Made of wear resistant solution dyed BCF nylon, this product is ideal for heavy traffic areas. The extremely stable Ecobak modular backing contains 20% recycled content.



◀ **DELICATE**  
**RCO002EXQU13**

## SPECIFICATIONS

<b>Fiber Type:</b> 100% Solution Dyed BCF Nylon
<b>Backing:</b> EcoBak Modular (100% PVC free)
<b>Tile Size:</b> 13.1" x 39.4"
<b>Dye Method:</b> Solution Dyed
<b>Construction:</b> Multi-level loop
<b>Pile Face Weight:</b> 19oz
<b>Pile Height:</b> 3 - 5mm
<b>Stitches per inch:</b> 10
<b>Number of Colours:</b> 5
<b>Gauge:</b> 1/12
<b>Density:</b> 4345
<b>Recommended Adhesive:</b> Mapei Ultrabond ECO811
<b>Installation Methods:</b> Monolithic, herringbone, ashlar, brick

## PERFORMANCE TESTING

<b>Flammability/Radiant Panel:</b> ASTM E648 CLASS 1
<b>Smoke Density:</b> ASTM E662 < 450
<b>Colourfastness:</b> AATCC16 = 5.0
<b>Static Generation:</b> AATCC 134 < 3.5kv
<b>Stain Resistance:</b> AATCC 175-2003 = 9

## SUSTAINABILITY & CERTIFICATIONS

<b>CRI Indoor Air Quality:</b> GLP1795
<b>Greenguard:</b> Yes
<b>Recycled Content:</b> approx. 20% in backing

## PACKAGING

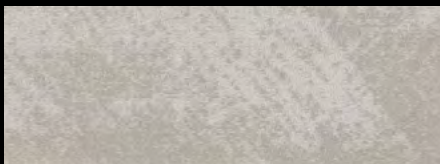
<b>Tiles/Carton:</b> 15
<b>SY/Carton:</b> 5.97
<b>Carton Weight:</b> 40lbs
<b>Cartons/pallet:</b> 30

## WARRANTY

<b>Wear:</b> Lifetime
<b>Delamination:</b> Lifetime
<b>Dimensional Stability:</b> Lifetime
<b>Backing Performance:</b> Lifetime



## COLOURS



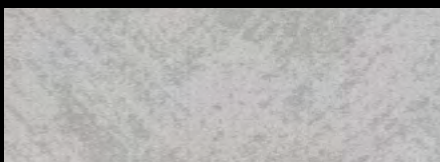
**TRANQUIL**  
RCO0002HARM13



**CONTENT**  
RCO0007HARM13



**ACCORD**  
RCO0006HARM13




**SERENE**  
RCO0001HARM13



**UNIFY**  
RCO0005HARM13





Harmony modular carpet tile showcases a serene organic pattern that plays on an eye-catching light/dark tonal effect that is available in 5 on-trend neutral colours. The trendy plank design will be a hit with designers because it is made of 100% solution dyed Nylon and it is suitable for heavy traffic commercial installations. The EcoBak modular backing has exceptional dimensional stability while being 100% PVC free and containing 20% recycled content.

◀ UNIFY  
RCO0005HARM13

# Inception

## SPECIFICATIONS

**Fiber Type:** 100% Solution Dyed BCF Nylon

**Backing:** EcoBak Modular (100% PVC Free)

**Tile Size:** 23.6" x 23.6"

**Dye Method:** Solution Dyed

**Construction:** Multi-Level Loop

**Pile Face Weight:** 17 oz

**Pile Height:** 2.5 - 5mm

**Stitches per inch:** 10

**Number of Colours:** 4

**Gauge:** 5/64"

**Recommended Adhesive:** Mapei Ultrabond ECO811

**Installation Methods:** Quarter Turn, Modified Ashlar

## PERFORMANCE TESTING

**Flammability/Radiant Panel:** ASTM E648 CLASS 1

**Smoke Density:** ASTM E662 < 450

**Colourfastness:** AATCC16 = 5.0

**Static Generation:** AATCC 134 < 3.5kv

**Stain Resistance:** AATCC 175-2003 = 9

## SUSTAINABILITY & CERTIFICATIONS

**CRI Indoor Air Quality:** GLP 1795

**Greenguard:** Yes

**Recycled Content:** Approx. 20% in backing

## PACKAGING

**Tiles/Carton:** 14

**SY/Carton:** 6.03

**Carton Weight:** 37.5 lbs

**Cartons/pallet:** 20

## WARRANTY

**Wear:** Lifetime

**Delamination:** Lifetime

**Dimensional Stability:** Lifetime

**Backing Performance:** Lifetime



## COLOURS



**INVENT**  
RCO0003INCE24



**GENERATE**  
RCO0004INCE24




**FOUNDATION**  
RCO0005INCE24



**FORMULATE**  
RCO0006INCE24





Bring the outdoors in, with the subtle and soothing organic pattern featured in Inception carpet tile. The larger 24"x24" format and solution dyed nylon fiber make this mainstreet commercial carpet tile the ideal choice for a variety of commercial spaces. The extremely stable Ecobak modular backing contains 20% recycled content.

◀ INVENT  
RCO0003INCE24

## SPECIFICATIONS

**Fiber Type:** 100% Solution Dyed BCF Polypropylene

**Backing:** EcoBak Modular (100% PVC Free)

**Tile Size:** 19.7" x 19.7"

**Dye Method:** Solution Dyed

**Construction:** Multi-Level Loop

**Pile Face Weight:** 18 oz

**Pile Height:** 2.5 - 5mm

**Stitches per inch:** 10

**Number of Colours:** 4

**Gauge:** 1/12"

**Recommended Adhesive:** Mapei Ultrabond ECO811

**Installation Methods:** Quarter Turn, Modified Ashlar

## PERFORMANCE TESTING

**Flammability/Radiant Panel:** ASTM E648 CLASS 1

**Smoke Density:** ASTM E662 < 450

**Colourfastness:** AATCC16 = 5.0

**Static Generation:** AATCC 134 < 3.5kv

**Stain Resistance:** AATCC 175-2003 = 10

## SUSTAINABILITY & CERTIFICATIONS

**CRI Indoor Air Quality:** GLP 1727

**Greenguard:** Yes

**Recycled Content:** Approx. 20% in backing

## PACKAGING

**Tiles/Carton:** 20

**SY/Carton:** 5.98

**Carton Weight:** 37.5 lbs

**Cartons/pallet:** 32

## WARRANTY

**Wear:** Lifetime

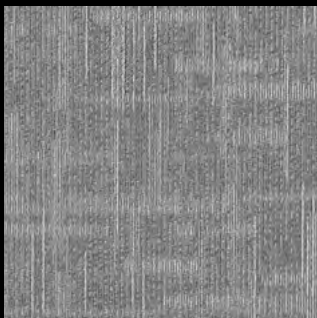
**Delamination:** Lifetime

**Dimensional Stability:** Lifetime

**Backing Performance:** Lifetime



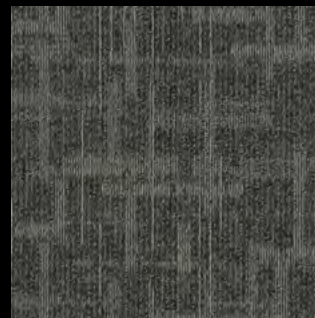
## COLOURS



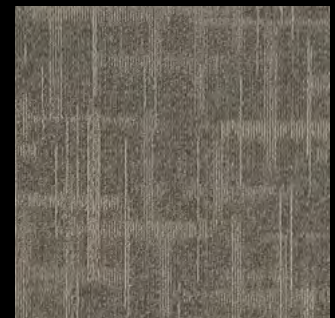
**MESH**  
RCO0001INTE19



**ENTWINE**  
RCO0002INTE19




**WEAVE**  
RCO0003INTE19



**MERGE**  
RCO0006INTE19



A modern conference room with a long, dark table and several black office chairs. The room has large windows on the left and a blue wall on the right. The floor is covered in a patterned carpet. A black text box is overlaid on the right side of the image.

Interlace is the perfect choice to add interest to any commercial office space with its striking interwoven crosshatch pattern and warm trendy neutral tones. The product features a 20"x20 size and is made of 100% solution dyed polypropylene, which is stain and fade resistant. The extremely stable Ecobak modular backing contains 20% recycled content.

◀ **ENTWINE**  
**RCO002INTE19**

## SPECIFICATIONS

**Fiber Type:** 100% Solution Dyed BCF Nylon

**Backing:** EcoBak Modular (100% PVC Free)

**Tile Size:** 23.6" x 23.6"

**Dye Method:** Solution Dyed

**Construction:** Multi-Level Loop

**Pile Face Weight:** 16 oz

**Pile Height:** 2.5 - 5mm

**Stitches per inch:** 10

**Number of Colours:** 5

**Gauge:** 1/12"

**Recommended Adhesive:** Mapei Ultrabond ECO811

**Installation Methods:** Quarter Turn, Modified Ashlar

## PERFORMANCE TESTING

**Flammability/Radiant Panel:** ASTM E648 CLASS 1

**Smoke Density:** ASTM E662 < 450

**Colourfastness:** AATCC16 = 5.0

**Static Generation:** AATCC 134 < 3.5kv

**Stain Resistance:** AATCC 175-2003 = 9

## SUSTAINABILITY & CERTIFICATIONS

**CRI Indoor Air Quality:** GLP 1795

**Greenguard:** Yes

**Recycled Content:** Approx. 20% in backing

## PACKAGING

**Tiles/Carton:** 14

**SY/Carton:** 6.03

**Carton Weight:** 37.5 lbs

**Cartons/pallet:** 20

## WARRANTY

**Wear:** Lifetime

**Delamination:** Lifetime

**Dimensional Stability:** Lifetime

**Backing Performance:** Lifetime



## COLOURS



**DEFINITE**  
RCO0001STRI24



**PRECISE**  
RCO0002STRI24



**FINE**  
RCO0003STRI24

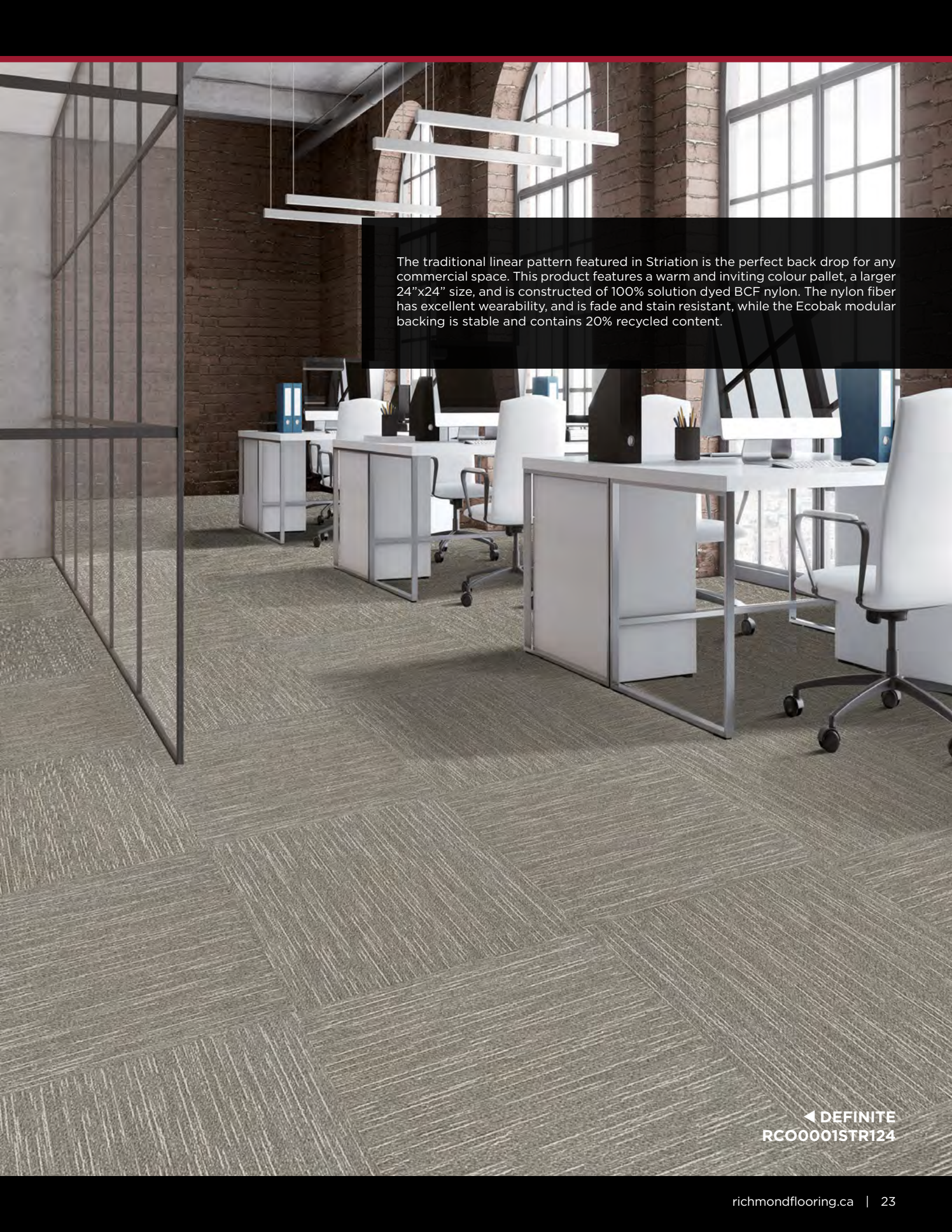


**TRUE**  
RCO0004STRI24



**UNBROKEN**  
RCO0005STRI24





The traditional linear pattern featured in Striation is the perfect back drop for any commercial space. This product features a warm and inviting colour pallet, a larger 24"x24" size, and is constructed of 100% solution dyed BCF nylon. The nylon fiber has excellent wearability, and is fade and stain resistant, while the Ecobak modular backing is stable and contains 20% recycled content.

◀ DEFINITE  
RCO0001STR124



## SPECIFICATIONS

**Fiber Type:** 100% Solution Dyed BCF Nylon

**Backing:** EcoBak Modular (100% PVC free)

**Tile Size:** 19.7" x 19.7"

**Dye Method:** Solution Dyed

**Construction:** Multi-level loop

**Pile Face Weight:** 17oz

**Pile Height:** 2.5 - 4.5mm

**Stitches per inch:** 10

**Number of Colours:** 5

**Gauge:** 1/12

**Density:** 4445

**Recommended Adhesive:** Mapei Ultrabond ECO811

**Installation Methods:** Quarter turn, modified ashlar

## PERFORMANCE TESTING

**Flammability/Radiant Panel:** ASTM E648 CLASS 1

**Smoke Density:** ASTM E662 < 450

**Colourfastness:** AATCC16 = 5.0

**Static Generation:** AATCC 134 < 3.5kv

**Stain Resistance:** AATCC 175-2003 = 9

## SUSTAINABILITY & CERTIFICATIONS

**CRI Indoor Air Quality:** GLP1795

**Greenguard:** Yes

**Recycled Content:** approx. 20% in backing

## PACKAGING

**Tiles/Carton:** 20

**SY/Carton:** 5.98

**Carton Weight:** 40lbs

**Cartons/pallet:** 32

## WARRANTY

**Wear:** Lifetime

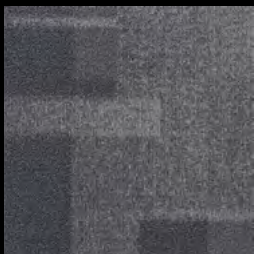
**Delamination:** Lifetime

**Dimensional Stability:** Lifetime

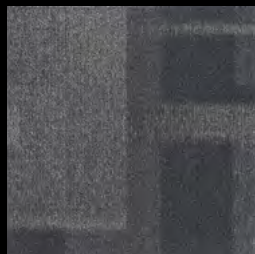
**Backing Performance:** Lifetime



## COLOURS



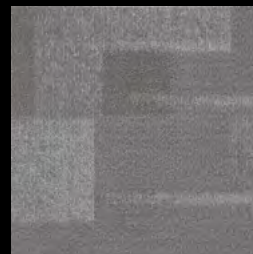
**CONFIGURE**  
RCO0007STRU19



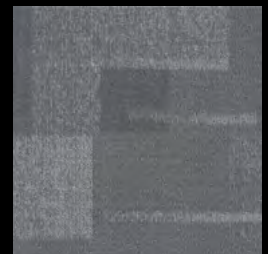
**CONSTRUCT**  
RCO0008STRU19



**FORMATION**  
RCO0006STRU19




**FRAMEWORK**  
RCO0001STRU19



**NETWORK**  
RCO0005STRU19





Structure tile showcases a trendy and eye-catching geometric pattern that is available in 5 on-trend neutral colours. Made of 100% solution dyed Nylon, this product is suitable for heavy traffic commercial installation. The EcoBak modular backing has exceptional dimensional stability while being 100% PVC free and containing 20% recycled content.

◀ **FRAMEWORK**  
**RCO0001STRU19**



# Backing Features

## EcoBak Modular Backing

AVAILABLE WITH ABSTRACT, ASPIRATION, ELEMENT, ENHANCE, EXQUISITE, HARMONY, INCEPTION, INTERLACE, STRIATION, STRUCTURE

- PVC-free alternative backing option
- Contains 20% recycled content
- Superior dimensional stability
- Class I flame resistance
- “Red List Free”
  - [Living-future.org/declare/declare-about/red-list/](http://Living-future.org/declare/declare-about/red-list/)



## PVC Modular Backing

AVAILABLE WITH COLLAGE, EXPRESSWAY

- 100% phthalate-free virgin PVC
- Fiberglass reinforced layer
- Superior dimensional stability
- Resistant to edge-ravel
- Class I flame resistance

## Stocking Program

All products featured in this catalogue are part of the Richmond Carpet Tile stocking program.



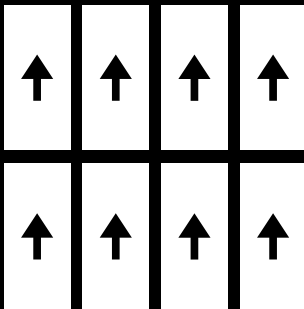


# Installation Options

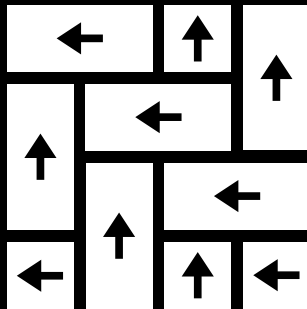
## Plank Install

AVAILABLE FOR ENHANCE, EXQUISITE, HARMONY

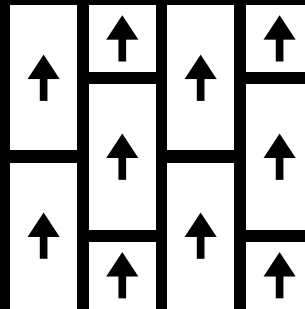
MONOLITHIC



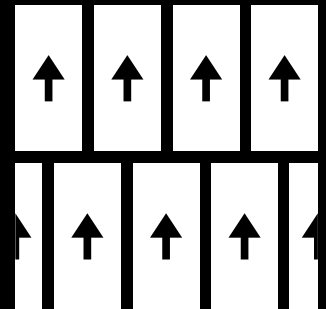
HERRINGBONE



ASHLAR



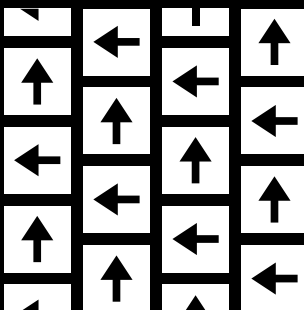
BRICK



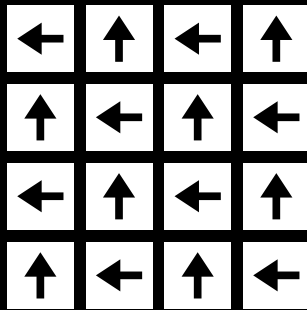
## Tile Install

AVAILABLE FOR ABSTRACT, ASPIRATION, COLLAGE, ELEMENT, INCEPTION, INTERLACE, STRIATION, STRUCTURE

MODIFIED ASHLAR



QUARTER TURN





▲  
ELEMENT - COBALT  
RCO0005ELEM19