

Industria, *Color Body Porcelain*.

A concrete inspired look with accents that embody an industrial and worn aesthetic.



Industria, *Color Body Porcelain.*

A contemporary collection  
with an eclectic industrial  
style.

*The World of Anatolia*

Passionate, dedicated and driven to bring together truly exceptional products that embody modernity, innovation and refinement. Anatolia provides its partnering customers across the world access to an extensive inventory as well as superior service, establishing itself among the largest tile and stone brands in the world.

anatolia

## Colours at a glance

Inspired by the natural worn look of concrete with naturally occurring variation and movement within the graphic.



Zinc



Lithium



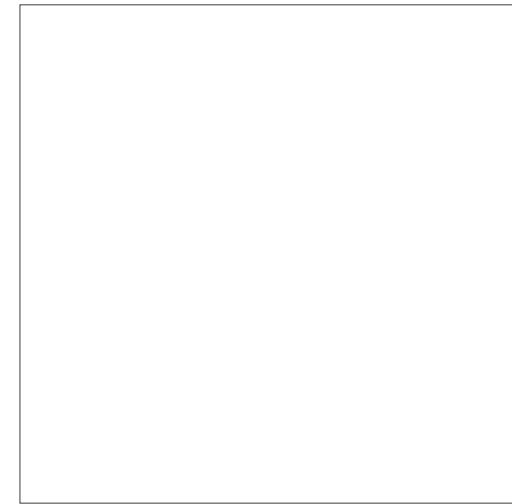
Chromium



Graphite

## Formats and finishes at a glance

The collection offers a selection of formats and sizes, ranging from large format tiles to regular rectified and includes complementary mosaics and bullnoses.



32 x 32 in / 80 x 80 cm  
Rectified  
Matte



24 x 48 in / 60 x 120 cm  
Rectified  
Matte

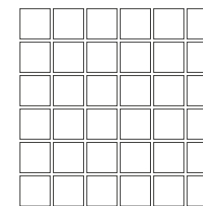


24 x 24 in / 60 x 60 cm  
Rectified  
Matte



12 x 24 in / 30 x 60 cm  
Rectified  
Matte

### *Mosaic*



2 x 2 in / 5 x 5 cm  
Mosaics  
Matte



24 x 48 in / 60 x 120 cm Industria Zinc Matte Rectified Tile  
On the counters: 2 x 2 in / 5 x 5 cm Industria Zinc, Matte Mosaic



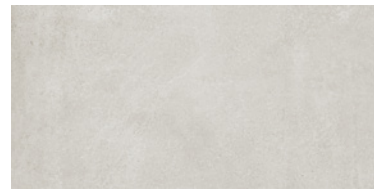
32 x 32 in / 80 x 80 cm  
Rectified  
Matte RTS450003092\*



24 x 48 in / 60 x 120 cm  
Rectified  
Matte RTS450003120\*



24 x 24 in / 60 x 60 cm  
Rectified  
Matte RTS450003110\*



12 x 24 in / 30 x 60 cm  
Rectified  
Matte RTS450003100

*Mosaic*



2 x 2 in / 5 x 5 cm  
Mosaic  
Matte RTS450101060

IMAGE VARIATIONS

This collection has a wide variety of tile facings by size to maximize the realism it can convey within a design space.

12 x 24 in / 30 x 60 cm  
Actual: 300 x 600 x 8,4 mm  
40 images

24 x 24 in / 60 x 60 cm  
Actual: 600 x 600 x 9,3 mm  
20 images

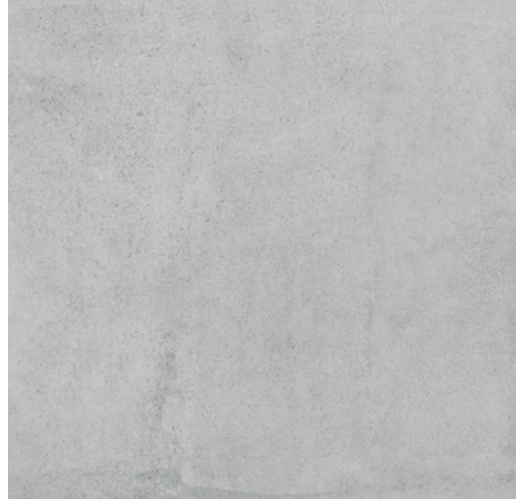
32 x 32 in / 80 x 80 cm  
Actual: 800 x 800 x 11,5 mm  
20 images

24 x 48 in / 60 x 120 cm  
Actual: 600 x 1200 x 10,3 mm  
20 images



12 x 24 in / 30 x 60 cm image variations

Industria, *Lithium*



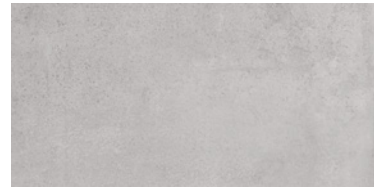
32 x 32 in / 80 x 80 cm  
Rectified  
Matte RTS450003052\*



24 x 48 in / 60 x 120 cm  
Rectified  
Matte RTS450003080\*



24 x 24 in / 60 x 60 cm  
Rectified  
Matte RTS450003070\*



12 x 24 in / 30 x 60 cm  
Rectified  
Matte RTS450003060

*Mosaic*



2 x 2 in / 5 x 5 cm  
Mosaic  
Matte RTS450101050

IMAGE VARIATIONS

This collection has a wide variety of tile facings by size to maximize the realism it can convey within a design space.

12 x 24 in / 30 x 60 cm  
Actual: 300 x 600 x 8,4 mm  
40 images

24 x 24 in / 60 x 60 cm  
Actual: 600 x 600 x 9,3 mm  
20 images

32 x 32 in / 80 x 80 cm  
Actual: 800 x 800 x 11,5 mm  
20 images

24 x 48 in / 60 x 120 cm  
Actual: 600 x 1200 x 10,3 mm  
20 images



12 x 24 in / 30 x 60 cm image variations

Industria, *Chromium*



32 x 32 in / 80 x 80 cm  
Rectified  
Matte RTS450002972\*



24 x 48 in / 60 x 120 cm  
Rectified  
Matte RTS450003000\*



24 x 24 in / 60 x 60 cm  
Rectified  
Matte RTS450002990\*



12 x 24 in / 30 x 60 cm  
Rectified  
Matte RTS450002980

*Mosaic*



2 x 2 in / 5 x 5 cm  
Mosaic  
Matte RTS450101030

IMAGE VARIATIONS

This collection has a wide variety of tile facings by size to maximize the realism it can convey within a design space.

12 x 24 in / 30 x 60 cm  
Actual: 300 x 600 x 8,4 mm  
40 images

24 x 24 in / 60 x 60 cm  
Actual: 600 x 600 x 9,3 mm  
20 images

32 x 32 in / 80 x 80 cm  
Actual: 800 x 800 x 11,5 mm  
20 images

24 x 48 in / 60 x 120 cm  
Actual: 600 x 1200 x 10,3 mm  
20 images



12 x 24 in / 30 x 60 cm image variations

# Industria, *Graphite*



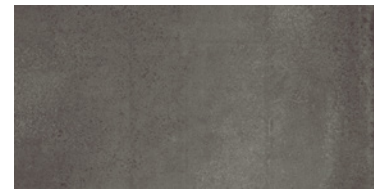
32 x 32 in / 80 x 80 cm  
Rectified  
Matte RTS450003012\*



24 x 48 in / 60 x 120 cm  
Rectified  
Matte RTS450003040\*

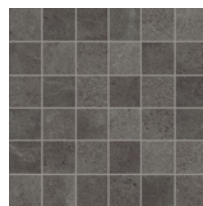


24 x 24 in / 60 x 60 cm  
Rectified  
Matte RTS450003030\*



12 x 24 in / 30 x 60 cm  
Rectified  
Matte RTS450003020

## *Mosaic*



2 x 2 in / 5 x 5 cm  
Mosaic  
Matte RTS450101040

## IMAGE VARIATIONS

This collection has a wide variety of tile facings by size to maximize the realism it can convey within a design space.

12 x 24 in / 30 x 60 cm  
Actual: 300 x 600 x 8,4 mm  
40 images

24 x 24 in / 60 x 60 cm  
Actual: 600 x 600 x 9,3 mm  
20 images

32 x 32 in / 80 x 80 cm  
Actual: 800 x 800 x 11,5 mm  
20 images

24 x 48 in / 60 x 120 cm  
Actual: 600 x 1200 x 10,3 mm  
20 images



12 x 24 in / 30 x 60 cm image variations



*The Anatolia difference*  
Unmatched elegance and unparalleled perfection.

Anatolia reinvents shapes and design compositions through refined colour palettes, innovative graphical refinements and creative reinterpretations of traditional, cultural and trend led inspirations. Meticulous care is taken to enhance a product's formation through graphical and technical improvements at every step of the development and execution process. This leads to the most exquisite and discerning tile collections.





*Technical Performance*  
Avant-garde design and attention to detail.

The goal of Anatolia's design department was to create the utmost elegant and sophisticated product, a perfect blend of functionality and style. New technical aspects, innovative shapes, and a new color palette were designed to represent the vibrant and lively nature of metropolitan city life, inspired by its culture and history.

## Packaging information / Renseignements sur l'emballage

Key logistical details including item codes and product specifications. / Détails logistiques clés, y compris les codes d'article et les spécifications du produit.

### Industria Product & Packaging Information / Renseignements sur les produits et sur l'emballage de la collection Industria

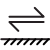







	ACTUAL DIMENSIONS	THICKNESS	CHROMIUM ITEM CODE	GRAPHITE ITEM CODE	LITHIUM ITEM CODE	ZINC ITEM CODE	LBS BOX	KGS BOX	PCS BOX	SOFT BOX	M² BOX	BXS SKID	SOFT SKID	M² SKID
	DIMENSIONS RÉELLES	ÉPAISSEUR	CODE D'ARTICLE CHROMIUM	CODE D'ARTICLE GRAPHITE	CODE D'ARTICLE LITHIUM	CODE D'ARTICLE ZINC	LB/ BTE	KG/ BTE	MCX./ BTE	PP/ BTE	M²/ BTE	BTES/ PALETTE	PP/ PALETTE	M²/ PALETTE
24 x 48 in / 60 x 120 cm Matte Rectified Color Body Porcelain Tile Carreaux de grès cérame rectifié coloré mat de 24 x 48 po / 60 x 120 cm	600 x 1200 mm	10.3 mm	<b>RTS450003000*</b>	<b>RTS450003040*</b>	<b>RTS450003080*</b>	<b>RTS450003120*</b>	72.99	33.11	2	15.5	1.44	28	434	40.32
32 x 32 in / 80 x 80 cm Matte Rectified Color Body Porcelain Tile Carreaux de grès cérame rectifié coloré mat de 32 x 32 po / 80 x 80 cm	800 x 800 mm	10 mm	<b>RTS450002972*</b>	<b>RTS450003012*</b>	<b>RTS450003052*</b>	<b>RTS450003092*</b>	63.56	28.79	2	13.78	1.28	42	578.76	53.76
24 x 24 in / 60 x 60 cm Matte Rectified Color Body Porcelain Tile Carreaux de grès cérame rectifié coloré mat de 24 x 24 po / 60 x 60 cm	600 x 600 mm	9.3 mm	<b>RTS450002990*</b>	<b>RTS450003030*</b>	<b>RTS450003070*</b>	<b>RTS450003110*</b>	65.64	29.77	4	15.5	1.44	30	465	43.2
12 x 24 in / 30 x 60 cm Matte Rectified Color Body Porcelain Tile Carreaux de grès cérame rectifié coloré mat de 12 x 24 po / 30 x 60 cm	300 x 600 mm	8.4 mm	RTS450002980	RTS450003020	RTS450003060	RTS450003100	59.52	27	8	15.5	1.44	32	496	46.08
Mosaics Mosaïques														
2 x 2 in / 5 x 5 cm Matte Color Body Porcelain Mosaic Mosaïque de grès cérame rectifié coloré mat de 2 x 2 in / 5 x 5 cm	299 x 299 mm	8.4 mm	RTS450101030	RTS450101040	RTS450101050	RTS450101060	38.45	17.44	10	9.69	0.88	45	436.05	39.96

\*Non Stock – Special Order only SKU's / Non disponible(s) en stock – N<sup>63</sup> d'articles disponibles seulement en commande spéciale

## Technical information / Renseignements techniques

Tile collection performance based on industry standards. / Rendement de la collection de carreaux selon les normes de l'industrie.

### Technical Information Renseignements techniques

	WATER ABSORPTION ABSORPTION D'EAU	ANSI / ISO - (%)	< 0.5%
	ABRASION RESISTANCE RÉSISTANCE À L'ABRASION	ANSI / ISO	CLASS 4 CLASSE 4
	SCRATCH HARDNESS RÉSISTANCE AUX ÉGRATIGNURES	ANSI / ISO - (Mohs)	9
	BREAKING STRENGTH RÉSISTANCE À LA RUPTURE	ANSI - (lbf) ISO - (N)	≥450 ≥2000
	SHADE VARIATION VARIATION DES TEINTES		V3
	SLIP RESISTANCE RÉSISTANCE AU GLISSEMENT	ANSI - DCOF (WET) ISO - R VALUE  ANSI - COEFFICIENT DE FRICTION DYNAMIQUE (DCOF) (HUMIDE) ISO - VALEUR R	MATTE ≥0.55 (ID, IW, IW+, EW*, O/G*) MATTE R10  MATTE ≥0,55 (ID, IW, IW+, EW*, O/G*) MATTE R10
	CHEMICAL RESISTANCE RÉSISTANCE AUX PRODUITS CHIMIQUES	ANSI / ISO	CLASS A CLASSE A
	STAIN RESISTANCE RÉSISTANCE AUX TACHES	ANSI ISO	CLASS A CLASS 5  CLASSE A CATÉGORIE 5
	FROST RESISTANCE RÉSISTANCE AU GEL	ANSI / ISO	PASS ACCEPTABLE

Test values are based on ANSI / ISO standards according to: ANSI A137.1 - Porcelain tile P1 Class, ISO 13006 - G - Bia Group, EN 14411 - G - Bia Group. Variances in test values can occur in different production lots.

Les valeurs d'essai sont fondées sur les normes de l'ANSI / l'ISO conformément à : ANSI A137.1 - Carreaux de porcelaine de catégorie P1, ISO 13006 - G - Groupe Bia, EN 14411 - G - Groupe Bia. Des variations entre les valeurs d'essai peuvent survenir dans différents lots de production.

## Usage recommendations / Recommandations d'utilisation

Anatolia's recommendations for suitable applications. / Recommandations d'Anatolia en matière d'applications adéquates.

Usage Recommendations* Recommandations d'utilisation*		MATTE COLOUR BODY PORCELAIN CARREAUX DE GRÈS CÉRAME RECTIFIÉ COLORE MAT	
APPLICATION		WALL MUR	FLOOR SOL
INTERIOR À L'INTÉRIEUR	RESIDENTIAL RÉSIDENTIELLE	•	ID, IW, IW+, EW*, O/G*
	COMMERCIAL COMMERCIALE	•	ID, IW, IW+, EW*, O/G*
	HEAVY COMMERCIAL COMMERCIALE INTENSIVE	•	
EXTERIOR À L'EXTÉRIEUR*	RESIDENTIAL / COMMERCIAL RÉSIDENTIELLE / COMMERCIALE	•	ID, IW, IW+, EW*, O/G*

\* These recommendations are not defined by ANSI/ISO standards.  
\* Ces recommandations ne sont pas définies par les normes de l'ANSI / l'ISO.

DCOF Classifications per ANSI A326.3: (ID): Interior, Dry (IW): Interior, Wet (IW+): Interior, Wet Plus (EW): Exterior, Wet (O/G): Oils/Greases  
Classifications du coefficient de frottement dynamique (DCOF) selon la norme ANSI A326.3 : (IS) : Intérieur, sec; (IH) : Intérieur, humide; (IH+) : Intérieur humide plus; (EH) : Extérieur humide; (H/G) : Huiles/grasses

\* Factors other than the noted DCOF result must also be taken into consideration. Such factors include, but are not limited to, expected contaminants, drainage, surface texture, effect of structure on the DCOF measurement, number of grout joints, traction-enhancing features, and intended use in addition to the other criteria noted in standard ANSI A326.3

\* Des facteurs autres que le résultat indiqué concernant le DCOF peuvent également être pris en considération. Ces facteurs comprennent, sans toutefois s'y limiter, les contaminants prévus, le drainage, la texture de la surface, l'effet de la structure sur la mesure du DCOF, le nombre de joints de coulis, les fonctions d'amélioration de l'adhérence et l'utilisation prévue, en plus des autres critères indiqués dans la norme ANSI A326.3.

# The World of Anatolia

*We are a constellation of people and places. Get in touch.*

CANADA  
TORONTO HEAD OFFICE,  
SHOWROOM AND DISTRIBUTION  
CENTER

8300 Huntington Road  
Vaughan, ON, L4H 4Z6  
Canada

info@anatolia.com

Tel: +1 905 771 3800  
Toll free tel: 1 877 311 3434  
Fax: +1 905 771 6300  
Fax: +1 866 324 1838

USA  
SAVANNAH OFFICE, SHOWROOM  
AND DISTRIBUTION CENTER  
Anatolia (USA) Inc.  
Tel: +1 877 311 3434

SAVANNAH WAREHOUSE #1  
202 International Trade Pkwy  
Port Wentworth, GA, 31407  
USA  
Tel: +1 912 438 5167

SAVANNAH WAREHOUSE #2  
250 International Trade Pkwy  
Port Wentworth, GA, 31407  
USA  
Tel: +1 912 438 5167

TURKIYE  
IZMIR OFFICE, SHOWROOM  
AND DISTRIBUTION CENTRE

Aliağa Organize Sanayi Bölgesi  
Çoraklar Mah. 5000 Sk. No: 34  
35800 Aliağa, İzmir,  
Türkiye  
Tel: +90 232 520 7300

IZMIR MANUFACTURING FACILITY

Aliağa Organize Sanayi Bölgesi  
Çoraklar Mah. 5000 Sk. No: 25 35800  
Aliağa, İzmir,  
Türkiye  
Tel: +90 232 520 7300

REGIONAL OFFICES

CHINA  
Room 517 Yi Shu Da Lou Ji Hua 4 Road  
Chan Cheng District, Foshan City  
Guang Dong Province, 528000  
China

INDIA  
206 - Pacific Business Park  
Mahendra Nagar (Part)  
8/A - National High Way  
Morbi, Gujarat, 363642  
India

USA  
Anatolia (USA) Inc.  
131 Crosslake Park Dr., Suite 203  
Mooresville, NC, 28117  
USA  
Tel: +1 877 311 3434

## *Credits*

ART DIRECTION  
AND GRAPHIC DESIGN  
Juma

## *Partnerships and Associations*



*Discover more at*  
richmondflooring.ca  
division9.ca

