

# Collage

## Modular Carpet Tile



### Features:

#### 100% BCF Olefin

- Permanent stain resistance
- Incredible dye-fastness
- Lasting stain resistance to spills and repeated cleaning
- Permanent color memory will stand up to the most demanding environments
- Exceptional colorfastness under the most rigorous conditions (even bleaching chemicals)
- Absorbs less than 0.1% of its own weight in water making easier to clean up spills
- Low static propensity
- PVC with Fiberglass backing



### Product Attributes:

- 1/12 gauge
- 100% BCF Olefin
- Solution Dyed
- 8 colours
- StainShield & ZipperShield,
- Packaging: 20 tiles per carton
- GreenGuard certified

### Specifications:

Fibre:	100% BCF Olefin
Dye Method:	Solution Dyed
Face Weight:	22 oz
Gauge:	1/12"
Backing:	Virgin PVC with Fiberglass
Size:	19.7" x19.7"
No. of Colours:	8
Installation:	Quarter Turn, Modified Ashlar
Adhesive:	Mapei's Ultrabond Eco 350 adhesive

### Warranty:

- Lifetime wear
- Lifetime dimensional stability
- Lifetime delamination
- Lifetime backing

# Collage

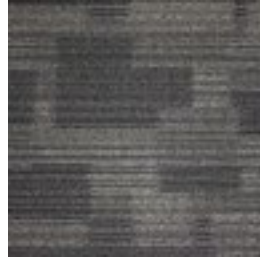
## Modular Carpet Tile



### Colour Range



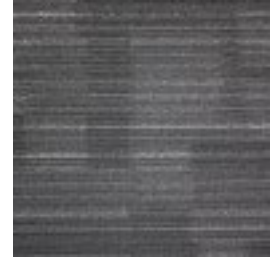
**Gun Metal**  
RCO0008COLL19



**Midnight**  
RCO0009COLL19



**Neutral Taupe**  
RCO0006COLL19



**Stonewash**  
RCO0010COLL19



**Charcoal**  
RCO0005COLL19



**Greystone**  
RCO0003COLL19



**Linen**  
RCO0002COLL19



**Taupe**  
RCO0004COLL19