



[www.lxhausys.com](http://www.lxhausys.com)

# H•FLOR

## PRESTG

SPC Plank And Tile

Click 6 mm/20 mil

Gluedown 5 mm/20 mil




Resilient Flooring





Featured Color: 7942 Ash Umber

# PRESTG

 Plank 12 Colors

 Tile 4 Colors












■ Product Configuration (SPC Click)

■ Product Configuration (SPC Gluedown)



## ■ Features

Click	Gluedown	Customer Benefits	
●	●		Stone Shield - Exceptional anti-scratch performance
●	●		No deformation from water
●	●		TransferGuard - Reduces prep time and ensures smooth installation (no “telegraphing”)
●			5Gi Locking System - Shortens installation time and ensures flush joints
●			Shortened installation time and maximized coherence by applying 5Gi Click structure
●			Excellent stability and underfoot comfort thanks to IXPE foam layer
●			Sound reduction by 21 dB (ISO 717-2:2013)
●			Top-of-class sound reduction - IIC rating: 64 (ASTM E90)
	●		Top-of-class sound reduction - IIC rating: 53 (ASTM E90)

All specifications are subject to change without notice.  
Application images are CGI renderings that are shown for illustration purpose only.  
Printed representation of colors may vary from actual product. Please view the actual product prior to purchase.

# ■ PRESTG – More Beautiful Than Nature

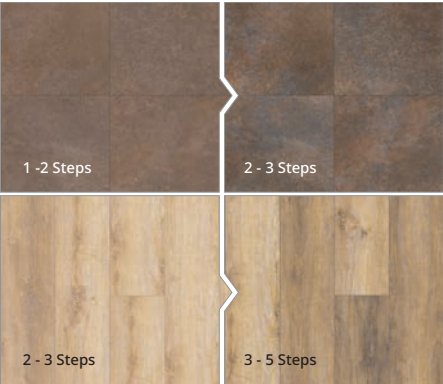
## CONTINUOUS EMBOSSED-IN REGISTER “C-EIR” TECHNOLOGY

HFLOR’s exclusive Continuous Embossed-In-Register Technology enables the realistic expression of unique textures and patterns found in wood and stone and through HFLOR’s random die-cut system repetition is reduced. Diverse color variations and rich patterns are conveyed through our “Big Size” design which is twice as large as conventional LVT flooring.



## DIVERSE COLOR RANGE

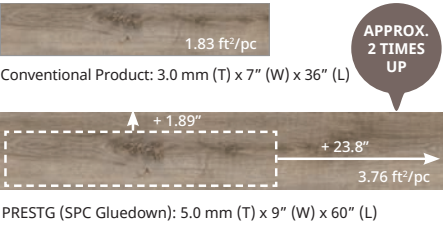
Unlike conventional LVT flooring, PRESTG applies the color diversity found in natural materials to create a more luxurious and beautiful space.



Conventional Product PRESTG

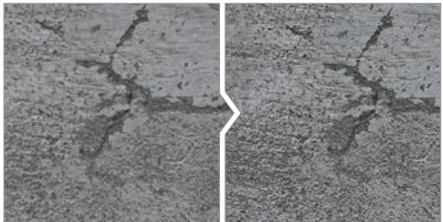
## BIG SIZE DESIGN

By approximately doubling the pattern size in comparison to conventional flooring, PRESTG is able to display large, beautiful wood visuals.



## HIGH-RESOLUTION PRINTING

Free from the limitations of conventional printing methods, high-resolution photo quality printing is applied to intricately showcase pattern details found in natural materials. With a resolution two times greater than the industry standard, amazingly realistic looks with unmatched clarity are achieved.



Conventional Product PRESTG (High-resolution Printing)

# ■ PRESTG – Timeless Durability

## TRANSFERGUARD (PREVENTS FLOOR TRANSFER)

Reduces prep time and ensures smooth installation (no “telegraphing”).



[CASTOR CHAIR TEST] ISO 4918  
198 lbs. castor chair test performed to check for flooring breaks and transfers.



Conventional Product: Tested for glue marks and tranfer after rotating 3,000 times (Tested by LX Hausys Research Center)  
PRESTG: No transfers after rotating 25,000 times

## SMART & EFFICIENT INSTALLATION

**5Gi** Easy Installation with 5Gi Locking System  
Shortens installation time and ensures flush joints.

## One-Day Installation

PRESTG can be installed directly over an existing flooring which shortens the installation period to one day\*.

## Mix & Match Installation

Creating a mixed installation with various materials, including carpet tiles, is possible due to the product’s elevated thickness.

\* Note:

- Uneven floors require a self-leveling procedure
- Gaps and breaks in the existing flooring require filling/repairs
- Can only be installed over LVT, LVP and mineral flooring that is fixed to the subfloor
- Installation time can vary according to environment and space



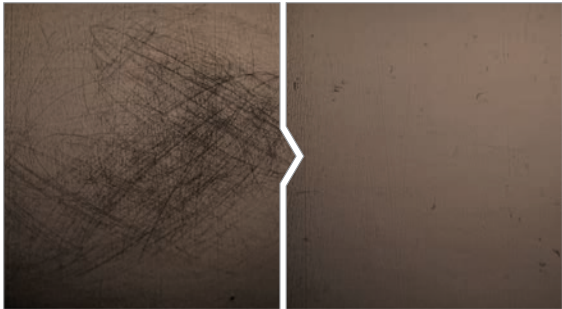
One-Day Installation Mix & Match Installation

## STONE SHIELD (HIGH-DENSITY SURFACE COATING)

A high-density, dual coating finish containing stone particles creates an exceptional anti-scratch performance.



[MARTINDALE TEST]  
EN16094: 2012  
Tested with 320 rotations on the product with a strength of 4N with a scratch pad (Scotch Brite Fleece SB7440).



Conventional Product (B5) PRESTG (B1 - B2)

B1 = No scratches  
B2 = Almost no scratches  
B3 = Moderate  
B4 = Many scratches  
B5 = Complex scratches in every direction  
(Tested by LX Hausys Research Center)



Specifications

COLLECTION NAME	PRESTG (SPC Click)
TOTAL # SKU'S (COLORS)	16

PRODUCT SPECIFICATIONS/CONTENT/CERTIFICATIONS	DETAILS		ADDITIONAL INFORMATION
Thickness	6.0 mm (0.236")		1.5 mm IXPE Foam
Wear Layer	20 mil (0.5 mm)		
Glass Fiber	N/A		
Finishing/Coating	Stone Shield		
Nominal Dimensions (inches)	Plank (6" x 48"), Tile (12" x 24")		
Actual Dimensions (mm)	Plank (150 mm x 1,220 mm), Tile (310 mm x 605 mm)		
Micro-Beveled	No		
Class/ASTM F1700	Class I - Type B (embossed), Grade 1, Backing Class B		
Backing Class	IXPE Foam		
Gloss Level	5 - 12		
Commercial Traffic	Residential/Commercial		
Added Antimicrobial	No		
Recycled Contents	100% Virgin Vinyl		
Backstamp Info	None		
CE Certification	Yes		
PACKING SPECIFICATIONS	DETAILS		ADDITIONAL INFORMATION
	Plank (6" x 48")	Tile (12" x 24")	
Pallet Dimensions (L x W x H)	1,300 x 1,050 x 981 (mm)	1,300 x 1,050 x 981 (mm)	
Square Feet per Plank/Tile	1.97	2.02	
Square Feet per Box	19.70	20.19	
Square Feet per Pallet	1,418.39	1,453.66	
Square Feet per Container	22,694.26	23,258.52	20 foot container
Weight per sq. ft. (lbs.)	1.69	1.64	
Weight per Plank/Tile (lbs.)	3.33	3.31	
Weight per Box (lbs.)	33.29	33.07	
Weight per Pallet (lbs.)	2,396.87	2,380.99	
Weight per Container (lbs.)	38,349.86	38,095.89	
Pieces per Box	10	10	
Boxes per Pallet	72	72	
Box Type	Corrugated	Corrugated	
Pallets per Container	16	16	
Boxes per Container	1,152	1,152	
PRODUCT PERFORMANCE/TESTING	PERFORMANCE		ASTM REQUIREMENT
ASTM F2055 Size and Tolerance	Passes		As specified 0.016 in.
ASTM F387 Thickness	Passes		As specified 0.008 in. (with foam)
ASTM F2055 Squareness	Passes		Max. 0.010 in.
ASTM F1914 Residual Indentation	Passes		Avg.≤0.007 in. (0.18 mm)
ASTM F2199 Dimension Stability	Passes		< 0.2%/lineal ft. (305 mm)
ASTM F2199 Dimension Stability	Passes		Max. 0.080 in. (2 mm)
ASTM F1914 Surface Integrity	Passes		No puncture through wear layer/deco into rigid core
ASTM F925 Chemical Resistance	Passes		No change/slight change
ASTM F1514 Resistance to Heat	Passes		< 8 (delta E) avg.
ASTM F1515 Resistance to Light	Passes		< 8 (delta E) avg.
ASTM E648 Critical Radiant Flux	Class 1		Class 1 ( > 0.45 W/cm²)
ASTM E662 Optical Smoke Density	Passes		< 450
ASTM C1028 Slip Resistance	Passes		ADA Compliant ( > 0.50)
ASTM F970 Static Load	Passes (500 psi with Foam)		250 psi ( < 0.005 in.)
TECHNICAL INFORMATION/DOCUMENTS	DETAILS		ADDITIONAL INFORMATION
Product Warranty	10 Years Heavy Commercial/30 Years Residential		
Installation Method	Full spread		
Approved Installation Locations	Above, Below, and On-Grade		
Recommended Adhesive	Any approved LVT adhesive		
Polish Required (Yes/No)	No		

COLLECTION NAME	PRESTG (SPC Gluedown)
TOTAL # SKU'S (COLORS)	16

PRODUCT SPECIFICATIONS/CONTENT/CERTIFICATIONS	DETAILS		ADDITIONAL INFORMATION
Thickness	5.0 mm (0.197")		
Wear Layer	20 mil (0.5 mm)		
Glass Fiber	N/A		
Finishing/Coating	Stone Shield		
Nominal Dimensions (inches)	Plank (9" x 60"), Tile (24" x 24")		
Actual Dimensions (mm)	Plank (228.6 mm x 1,523 mm), Tile (600 mm x 600 mm)		
Micro-Beveled	No		
Class/ASTM F1700	Class III Printed Film Vinyl Tile - Type B (embossed)		
Backing Class	Commercial Grade		
Gloss Level	5 - 12		
Commercial Traffic	Heavy Commercial		
Added Antimicrobial	No		
Recycled Contents	100% Virgin Vinyl		
Backstamp Info	None		
CE Certification	Yes		
PACKING SPECIFICATIONS	DETAILS		ADDITIONAL INFORMATION
	Plank (9" x 60")	Tile (24" x 24")	
Pallet Dimensions (L x W x H)	1,600 X 1,000 x 673 (mm)	640 x 1,280 x 900 (mm)	
Square Feet per Plank/Tile	3.75	3.88	
Square Feet per Box	22.49	19.38	
Square Feet per Pallet	1,349.25	968.85	
Square Feet per Container	18,889.44	17,439.24	20 foot container
Weight per sq. ft. (lbs.)	1.96	1.96	
Weight per Plank/Tile (lbs.)	7.34	7.58	
Weight per Box (lbs.)	44.05	37.92	
Weight per Pallet (lbs.)	2,642.90	1,895.98	
Weight per Container (lbs.)	37,000.63	34,127.56	
Pieces per Box	6	5	
Boxes per Pallet	60	50	
Box Type	Corrugated	Corrugated	
Pallets per Container	14	18	
Boxes per Container	840	900	
PRODUCT PERFORMANCE/TESTING	PERFORMANCE		ASTM REQUIREMENT
ASTM F2055 Size and Tolerance	Passes		As specified 0.016 in./lin.ft.
ASTM F386 Thickness	Passes		As specified 0.005 in./lin.ft.
ASTM F2055 Squareness	Passes		Max. 0.010 in.
ASTM F1914 Residual Indentation	Passes		Avg. < 8%
ASTM F137 Flexibility	Passes 6 mm mandrel		1 in. (25.4 mm) mandrel/no crack or break
ASTM F2199 Dimension Stability	Passes		< 0.020 in./ft.
ASTM F925 Chemical Resistance	Passes		No change/slight change
ASTM F1514 Resistance to Heat	Passes		< 8 (delta E) avg.
ASTM F1515 Resistance to Light	Passes		< 8 (delta E) avg.
ASTM E648 Critical Radiant Flux	Class 1		Class 1 ( < 0.45 W/cm²)
ASTM E662 Optical Smoke Density	Passes		< 450
ASTM C1028 Slip Resistance	Passes		ADA Compliant ( > 0.50)
ASTM F970 Static Load	2,000 psi		250 psi ( < 0.005 in.)
TECHNICAL INFORMATION/DOCUMENTS	DETAILS		ADDITIONAL INFORMATION
Product Warranty	10 Years Heavy Commercial/30 Years Residential		
Installation Method	Full spread		
Approved Installation Locations	Above, Below, and On-Grade		
Recommended Adhesive	Any approved LVT adhesive		
Polish Required (Yes/No)	No		



Featured Color: 7902 Sunkissed Marigold



Featured Color: 7937 Omoi Brown



7902 Sunkissed Marigold



7901 Bronzed Sienna



7936 Hazy Lilac Oak



7937 Omoi Brown



7939 Desert Palm



7938 Saddle Oak



7940 Mystic Sepia



7913 Caramel Spectrum



Featured Color: 7940 Mystic Sepia





Featured Color: 7911 Tuscan Mushroom



7911 Tuscan Mushroom



7914 Midnight Mocha



7941 Toffeenut Sand



7942 Ash Umber



Featured Color: 6930 Icycle Marble



6930 Icycle Marble



6932 Taupe Marble



Featured Color: 6932 Taupe Marble



Featured Color: 6933 Carbon Black



6931 Silvery Moon



6933 Carbon Black

# H·FLOR

by LX Hausys



LX Hausys America, Inc.  
900 Circle 75 Parkway, Suite 1500  
Atlanta, GA 30339  
Toll Free 866-544-4622  
Email [flooring@lxhausys.com](mailto:flooring@lxhausys.com)  
[www.lxhausys.com](http://www.lxhausys.com)