

COLLECTION NAME	Natural Selection Plus Wood	
TOTAL # SKUs (Colors)	15	
PRODUCT SPECIFICATIONS/CONTENT/CERTIFICATIONS	DETAILS	ADDITIONAL INFORMATION
Thickness	2 mm (0.0787")	
Wear Layer	28 mil (0.7 mm)	
Glass Fiber	Yes	
Finishing/Coating	Easy Clean	
Nominal Dimensions (inches, feet)	Width: 78"/6'6", Length: 68'	
Actual Dimensions (inches, feet, meters)	Width: 78.75"/2.00 m, Length: 68.58'/20.90 m	
Micro-Beveled	No	
Class/ASTM F1303	Type I, Grade I	
Backing Class	4-Ply Fused Backing System, Class B	
Gloss Level	5-10	
Commercial Traffic	Heavy Commercial	
Added Antimicrobial	Yes	
Recycled Contents	100% Virgin Vinyl	
Backstamp Info	None	
CE Certification	Yes	
PACKING SPECIFICATIONS	DETAILS	ADDITIONAL INFORMATION
Pallet Dimensions (L x W x H)	1,120 mm x 860 mm x 2,100 mm	
Rolls per Pallet	12 Rolls	
Pallets per Container	10 Pallets (12 Rolls/Pallet)	20 foot container
Square Yard per Roll	50 sq. yd.	
Square Yard per Pallet	600 sq. yd.	
Weight per Roll (lbs.)	287.7 lbs.	
Weight per Pallet (lbs.)	3,562.6 lbs.	
Roll Wrapping Paper Type	Craft Paper with PE Foam Wrapping (PP Coating)	
PRODUCT PERFORMANCE/TESTING	PERFORMANCE	REQUIREMENT
ASTM D2047 Slip Resistance	> 0.65 (wet, dry)	Static coefficient of friction>0.6 (ADA), 0.5 OSHA
ASTM F970 Static Load Limit	≥ 1,000 psi	Max 0.005"
ASTM F2753 Dynamic Rolling Load	Passes (25,000 cycles)	≤ slight surface disturbance
ASTM F1914 Residual Indentation	Passes < 8%	Average less than 8%, maximum single reading 10%
ASTM F137 Flexibility	Passes	No crack or break
ASTM F925 Chemical Resistance	Passes	No change/slight change
ASTM F1514 Resistance to Heat	Passes	ΔE ≤ 8
ASTM F1515 Resistance to Light	Passes	ΔE ≤ 8
ASTM E648 Critical Radiant Flux	Passes	> 0.45 watts/cm², NFPA Class I
ASTM E662 Optical Smoke Density	Passes	< 450 in flaming mode
ASTM G21 Resistance to Fungi	Passes	No Growth
AATCC 147 Antimicrobial Activity	Passes	No Growth
EN 16094 Micro Scratch Resistance	MSR - B2	
TECHNICAL INFORMATION/DOCUMENTS	DETAILS	
Product Warranty	15 Years Heavy Commercial	
Installation Method	Full spread	
Approved Installation Methods	Gluedown	
Recommended Adhesive	Any approved Commercial Sheet adhesive	
Polish Required (Yes/No)	No	

All specifications are subject to change without notice.
CGI rendering shown for illustration purpose only.
Printed representation of colors may vary from actual product. Please view the actual product prior to purchase.



LX Hausys America, Inc.
900 Circle 75 Parkway, Suite 1500
Atlanta, GA 30339
Toll Free 866-544-4622
Email flooring@lxhausys.com
www.lxhausys.com





www.lxhausys.com

H•FLOR

Natural Selection Plus | Wood
Heterogeneous Sheet
2 mm/28 mil



Resilient Flooring

H·FLOR

by LX Hausys

LX Hausys is one of the world's leading providers of building and decorative materials. For more than 70 years, we've been producing high performance flooring products using the latest advanced manufacturing techniques to create eco-conscious and human-friendly resilient flooring solutions.

Whether you prefer a more traditional aesthetic or a contemporary look, **Natural Selection Plus** Collection offers a variety of designs engineered with precision to suit your space.



Natural Selection Plus

HFLOR's Natural Selection Plus is inspired by the beautiful, restorative and healthy benefits found in nature.

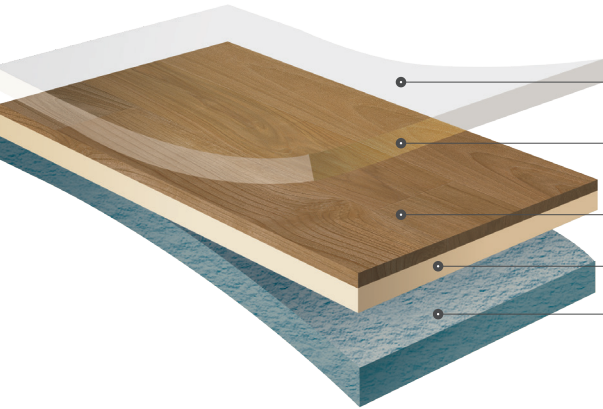
Natural Selection Plus | Wood

Space and Ambience

By capturing nature's textures and soothing colors, the Natural Selection Plus Collection transforms interiors into areas of comfort and wellbeing.

■ Product Configuration

Natural Selection Plus | Wood



PUR Easy Clean UV

Wear Layer
28 mil (0.7 mm)

Printed Layer

Dimensional Layer

Compact Layer

Pattern	Colors
Wood	15



■ Applications



Healthcare



Education

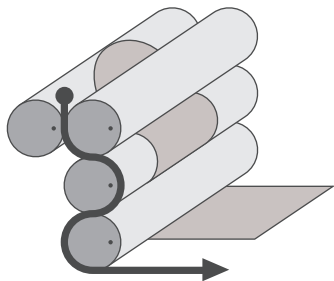


Office



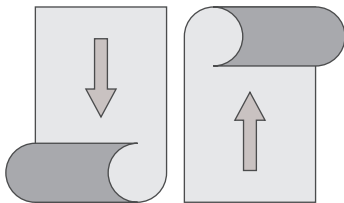
Hospitality

■ Production Method



Our advanced Calendering process creates dimensional stabilities, helping to eliminate unwanted gaps between sheets after installation, which can trap dirt and create conditions for bacterial growth.

■ Installation



Please follow the HFLOR (Heterogeneous Sheet) Installation Guide. Visit the website for details.



■ Features and Benefits

01
Durability



Wear Layer
28 mil (0.7 mm) wear layer ensures durability, ideally suited for high-traffic commercial applications.



Static Load
Featuring high indentation resistance in accordance with ASTM F970 testing standards.



Dynamic Rolling Load
Withstands 25,000 cycles of rolling loads, resulting in no exposure of wear layer in accordance with ASTM F2753.

02
Low Maintenance



Micro-Scratch Resistance
High resistance to scratches ensures the surface lasts longer in accordance with EN 16094 testing standards.



No Waxing & Polishing
Special surface coating technology eliminates the need for waxing and polishing, reducing high maintenance expenses.



Ease of Cleaning
Unique surface treatment technology prevents outer contaminants from penetrating the surface and is easy to clean thanks to its Lotus Effect Mechanism.

03
Hygiene



Anti-Fungal
Enhanced technology prevents the growth of fungi to provide a more hygienic environment in accordance with ASTM G21.



Anti-Bacterial
Superior resistance to outer contaminants and bacteria thanks to its specially treated PUR coating in accordance with AATCC 147.



NAP4186 Fumed Walnut



NAP416B Portobello* + NAP4181 Honey Walnut

* Color available in the Natural Selection Plus | Modern Collection.

01. Durability

Features and Benefits

A 28 mil (0.7 mm) thick wear layer guarantees outstanding durability that stands up to everyday wear and tear, making the Natural Selection Plus Collection the ideal solution for heavy-traffic areas.



Wear Layer
28 mil (0.7 mm)



Static Load
(≥ 1,000 psi)



Dynamic Rolling Load
(≥ 25,000 cycles)



02. Low Maintenance

HFLOR's special surface treatment technology ensures easy maintenance and eliminates the need for waxing and polishing. It also improves resistance to scratches and stains to protect the floor patterns so they last longer.



Micro-Scratch
Resistance



No Waxing &
Polishing

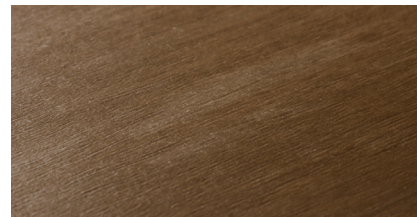


Easy Cleaning



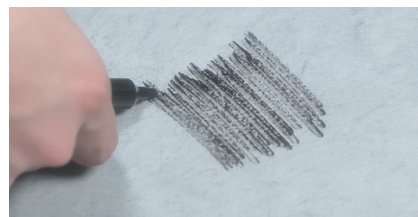
Regular Sheet: B4

Martindale Test (EN16094)
Tested with 160 rotations on the product with a strength of 4N with a scratch pad.
(Scotch-Bright pad #7440)

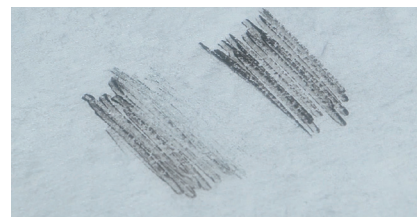


Natural Selection Plus: B2

B1 = No scratches, B2 = Only few scratches,
B3 = Moderate, B4 = Many scratches,
B5 = Complex scratches in every direction



Without Easy Clean UV



Natural Selection Plus

03. Hygiene

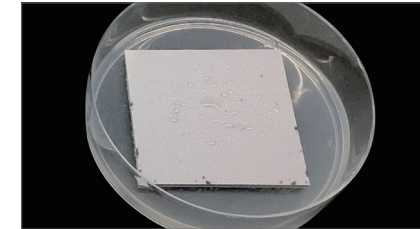
Natural Selection Plus offers hygienic properties as it is manufactured to prevent bacteria and mold from penetrating its surface. Easy to clean, it is ideal for use in hospitals, medical facilities, laboratories and other spaces where hygiene is essential.



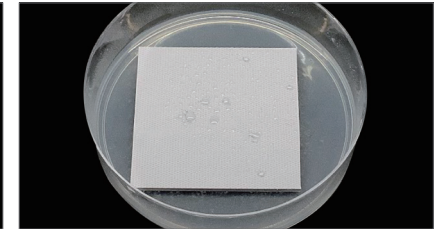
Anti-Fungal
(No growth)



Anti-Bacterial
(No growth)



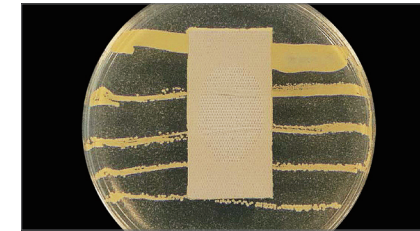
Without Anti-Fungal Technology



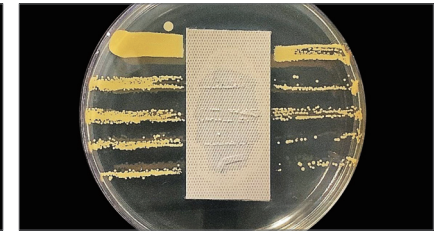
Natural Selection Plus

Anti-Fungal Test (ASTM G21)

This test evaluates mold resistance properties. Samples were examined once a week for a four-week period.



Without Anti-Bacterial Technology



Natural Selection Plus

Anti-Bacterial Test (AATCC 147)

This qualitative test demonstrates anti-bacterial activity by visually showing the boundaries of bacterial growth around the sample.



NAP4194 Farmhouse Oak

* Color available in the Natural Selection Plus | Modern Collection.

Natural Selection Plus | Wood

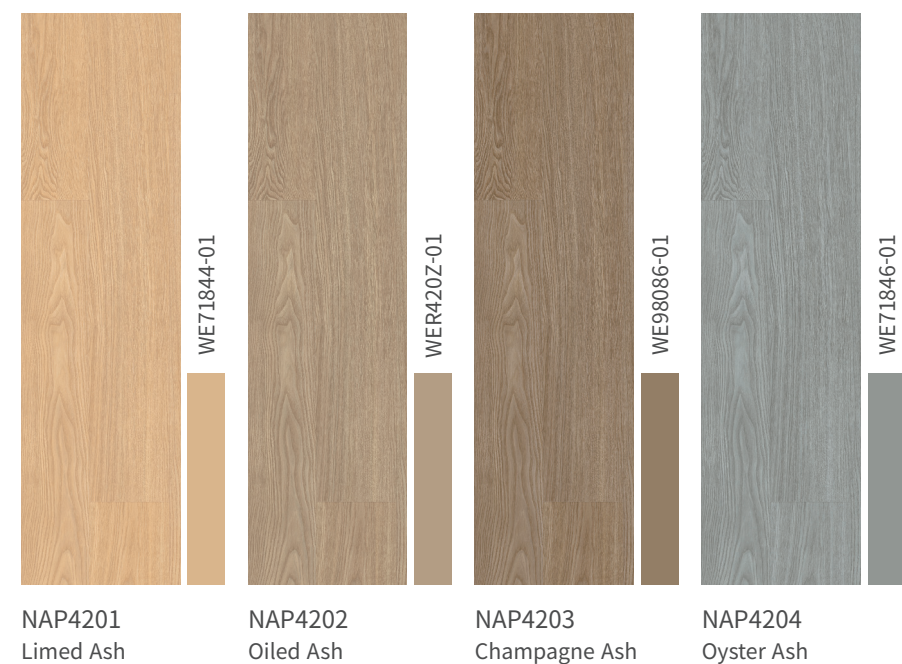
European Walnut



Golden Oak



Natural Ash



※ Use matching welding rod for installation.



European Walnut

Natural Line

36.22" (920 mm)

5.63" (143 mm)

Full repeat (L x W): 72.44" (1,840 mm) x 78.75" (2,000 mm)

The pattern design features different shades to reflect the look of hardwood floors.



NAP4181
Honey Walnut



NAP4184
Fawn Walnut



NAP4182
Natural Walnut



NAP4185
Toasted Walnut



NAP4183
Traditional Walnut



NAP4186
Fumed Walnut



NAP4184 Fawn Walnut



NAP4182 Natural Walnut



NAP4185 Toasted Walnut

Golden Oak

Natural Line

36.22" (920 mm)

5.63" (143 mm)

The pattern design features different shades to reflect the look of hardwood floors.

Full repeat (L x W): 72.44" (1,840 mm) x 78.75" (2,000 mm)



NAP4191
Blonde Oak

NAP4194
Farmhouse Oak



NAP4192
Bleached Oak

NAP4195
Smoked Oak



NAP4193
Fine Oak



NAP4193 Fine Oak



NAP4195 Smoked Oak



NAP4191 Blonde Oak

Natural Ash

Natural Line

36.22" (920 mm)

5.63" (143 mm)

The pattern design features different shades to reflect the look of hardwood floors.

Full repeat (L x W): 72.44" (1,840 mm) x 78.75" (2,000 mm)



NAP4201
Limed Ash

NAP4203
Champagne Ash



NAP4202
Oiled Ash

NAP4204
Oyster Ash



NAP4203 Champagne Ash



NAP4202 Oiled Ash



NAP4201 Limed Ash



NAP4181 Honey Walnut



NAP4192 Bleached Oak

Natural Selection Plus | Wood



NAP4183 Traditional Walnut + NAP416C Moon*



NAP416B Portobello* + NAP4204 Oyster Ash

* Colors available in the Natural Selection Plus | Modern Collection.